

# LD36 IP66



High Power Linear Lensed LED Surface Washer

Data sheet - Page 1



LD36 is now offered in a redesigned IP66 rated housing to reduce the cost per metre. This makes it a far more cost effective solution for lighting walls in showers where IP54 is not a high enough rating, and IP68 is not cost effective. It features all the benefits of LD36 with excellent output and wall wash capabilities. It uses the latest in LED technology and collimating lenses to focus the light to create a continuous wash of light. For an IP67/68 exterior wall grazer, please see our LD38.

## Key Features

- Excellent wall wash capabilities
- Uses the latest in LED technology
- High efficiency optics specially designed for LightGraphix guarantee excellent beam spread and shape
- LED spacing of 50, 75 and 100mm are available, allowing cost savings with fewer LEDs and drivers whilst still achieving the desired effect
- High power from compact size
- Custom made lengths as standard
- Available with Switched, 0-10V, DMX or Dali drivers

## Specification

Applications



Beam Angles

12°, 31°, 48°, 36° X 12°

LED type

Cree XPG2

Colour temperature

2700K\*\* / 3000K | 5000K

Drive Current (mA)

350	500	350	500
-----	-----	-----	-----

LED power\* (W)

1.2W	1.7W	1.2W	1.7W
------	------	------	------

CRI (typical)

93	93	75	75
----	----	----	----

Forward voltage (V)<sub>100</sub>

3.0V	3.2V	3.0V	3.2V
------	------	------	------

LED spacing

Delivered lm/m\*\* (L<sub>100</sub>)

50mm	2065	2818	2509	3423
------	------	------	------	------

75mm	1342	1832	1631	2225
------	------	------	------	------

100mm	1032	1409	1254	1712
-------	------	------	------	------

Lumens per circuit watt\*\*\*

86	83	105	101
----	----	-----	-----

LED lifetime (to 70% lumen maintenance)

50,000hrs at a max ambient temperature of 35°C

Materials

Frosted polycarbonate end caps, polycarbonate clear tube, with silver anodised aluminium extrusion enclosed.

Wiring

Comes pre-wired with 2m lead, can be specified with up to 10m at extra cost

IP rating

IP66

\*LED wattage includes losses associated with using an 85% efficient driver

\*\*2700K lumen output is 12% lower than the 3000K figure listed

4000K lumen output is 14% higher than the 3000K figure listed (80 CRI)

\*\*\*Data shown allows for 50mm spacing



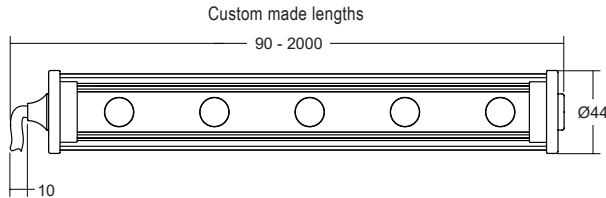
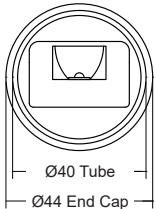
# LD36 IP66

High Power Linear Lensed LED Surface Washer



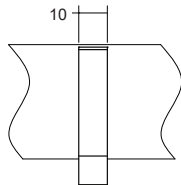
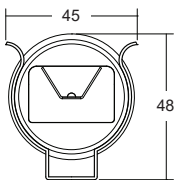
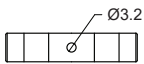
Data sheet - Page 2

## Fixing Options and Dimensions



(Dimensions in mm)

### /SC Spring Clip Fixing



(Dimensions in mm)



## Order Codes and Options

Product code	LED colour	LED spacing	Product colour	Fixing option	Length
LD36 - 350 IP66 - 500 IP66	<input type="text"/>	<input type="text"/>	<input type="text"/>	<input type="text"/>	<input type="text"/>

Example: LD36-500 IP66 / LW30 / 50 / Silver Anodised / SC / 1200mm

Product codes with output options	
1.2W LED at 350mA	LD36-350 IP66
1.7W LED at 500mA	LD36-500 IP66
LED colour options	
Super Warm White (2200K)	/LW22
Extra Warm White (2700K)	/LW27
Warm White (3000K)	/LW30
White (4000K) - on request	/LW40
Cool White (5000K)	/LW50
*Other LED colour temperatures are available. Please speak to a member of our sales team.	
LED spacing	
50mm	/50
75mm	/75
100mm	/100
Beam / lens angle options	
12° narrow spot	/NB
31° medium	/MB
48° wide	/WB
36° x 12° oval beam	/OB
Product colour	
Silver anodised (end caps are frosted polycarbonate)	
Fixing options	
Spring clips	/SC
Use with 350mA and 500mA constant current LED drivers	
We have a wide range of dimmable LED drivers, 0-10V, DMX, DALI and Mains dimmable. Please see the downloads section on our website.	

## Photometrics

Photometric files are included in the design pack which can be downloaded from the LD36 IP66 product page on the website.